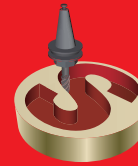


SolidCAM + SolidWorks

The complete integrated Manufacturing Solution



SolidCAM

The Leaders in Integrated CAM

```
T2 M6 ("TOOL 2 - DIA 24.0")
(MOD)
O 05411
1 G22 N-6001
2 G22 N-6000
3 G0 X87.851 Z170 Y47.399 S1000 M13
4 G33 C3-1
5 G141
16 G22 N-9002 ("***5X-selected-faces1-T2***")
17 G40
18 G23 C3-1
19 M9
20 G74 Z-1 L1
21 G74 X-700 Y-520 L1
22 G7 L1-1
23 G23 C3-1
24 M30
%MM5001
%SD01
N5 (X) E101-0 (Y) E102-0 (Z) E103-0 (A) E111-0 (B) E112-0 (C) E113-0-E105
N6 E180-0 E181-0 E182-0
%MM5002
N5 ("***5X-SELECTED-FACES1-T2***")
N6 G0 X87.851 Y47.399 Z130 C0 S18.367
N7 Z121.585
N8 X85.825 Y44.417 Z103.949
N9 G1 X85.6 Y44.086 Z101.99 F33
N10 X85.597 Y43.937 Z102.009
N11 X85.53 Y43.768 Z102.049
N12 X85.434 Y43.542 Z102.089
N13 X85.304 Y43.344 Z102.127
N14 X85.142 Y43.171 Z102.16
N15 X84.958 Y43.026 Z102.189
N16 X84.741 Y42.915 Z102.212
N17 X84.514 Y42.839 Z102.239
N18 X84.278 Y42.802 Z102.269
N19 X84.038 Y42.804 Z102.242
N20 Y42.799
N21 X82.994 Y42.294 Z102.251 C09.126 S18.367
N22 X81.81 Y42.585 Z102.25 C09.983 S17.301
N23 Y50.857 Y43.083 Z102.259 C04.708 S18.12
N24 X79.025 Y43.254 Z102.259 C01.673 S18.12
N25 Y42.259 Z102.259
```



- 2.5D Milling
- 3D Milling
- High Speed Machining (HSM)
- Multi-Sided Indexial Milling
- Simultaneous 5-Axis Milling
- Turn-Mill up to 5 Axes
- EDM

The Gold-certified integrated CAM-Engine for SolidWorks

THE MACHINIST'S CHOICE

- For more than 2 decades, thousands of worldwide users have relied on the innovative CAM solutions provided by SolidCAM.
- SolidCAM is widely used in the mechanical manufacturing, electronics, medical, consumer products, machine design, automotive and aerospace industries, as well as in mold and die and rapid prototyping shops.

FULL INTEGRATION AND ASSOCIATIVITY

- With the seamless single-window integration of SolidCAM in SolidWorks, all machining operations are defined, calculated and verified without leaving the SolidWorks environment.
- All geometries used for machining are fully associative to the SolidWorks design model. SolidCAM enables the user to automatically synchronize all machining operations with the updated geometry.

ADVANCED CAM-INTELLIGENCE

- SolidCAM supports knowledge-based manufacturing through customizable parametric process templates.
- SolidCAM's Automatic Feature Recognition and Machining (AFRM) module automates the manufacturing of parts.

VISUALIZATION AND MACHINING OF REST MATERIAL

- At any stage of the manufacturing process, SolidCAM provides powerful functions to display, analyze and machine the rest material.
- Realistic verification tools for 2D simulation, solid verification and machine simulation.

Milling

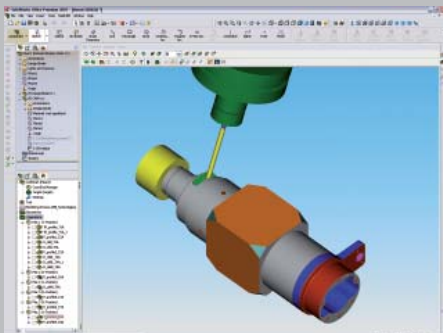
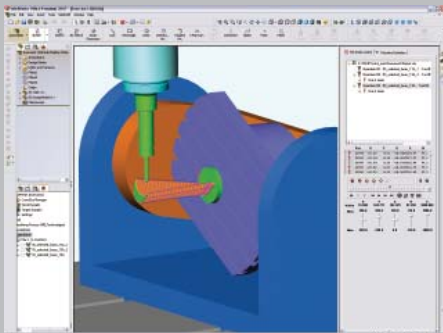
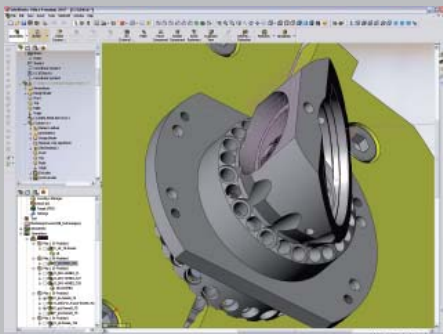
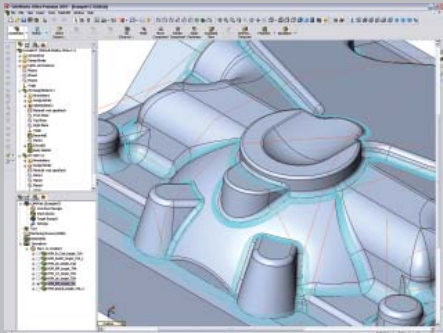
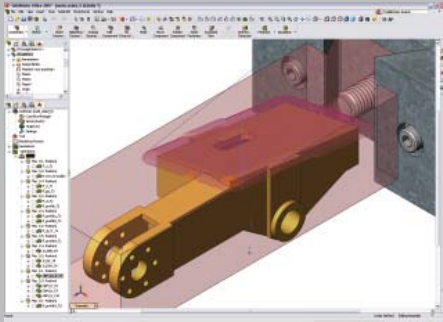
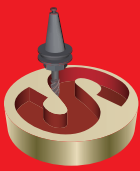
- 2.5 axes
- 3 axes
- High Speed Machining
- 4/5 axes indexial
- 4/5 axes simultaneous

Turn-Mill

- Axes XZ
- Axes XZC, XYZC, XYZCB
- Backspindle support

EDM

- Wirecut 2 axes
- Wirecut 4 axes
- Electrodes



2.5D MILLING

- Provides interactive and automated powerful 2.5D Milling operations on SolidWorks models
- Supports Profile and Pocket Rest material machining
- Automatic hole feature recognition and machining
- Supports special thread milling operation

3D MILLING

- Ideal for 3D milling of mainly prismatic parts
- Automatic detection of flat and vertical areas
- Integrated rest material machining
- Supports Torochoidal and plunge roughing

HIGH-SPEED MACHINING (HSM)

- Powerful module for High-Speed machining of complex 3D Parts, aero-space parts, molds, tools and dies
- Offers unique machining and linking strategies for generating high-speed toolpaths
- Cutting moves and retracts are smoothed to maintain a continuous machine motion
- Retracts are kept to a minimum to minimize air cutting
- Efficient and smooth toolpaths translate to top surface quality, less wear on tools and longer life for CNC machine tools

INDEXIAL 4/5 AXES MACHINING

- Efficient and profitable machining of multi-sided parts on 4/5 axes machining centers
- Enables flexible set-ups and reduces the need for special clamping jigs

SIMULTANEOUS 5-AXIS MACHINING

- Industry-proven 5-axis machining strategies
- Powerful collision check and avoidance for tool, holder and other machine tool components
- Simulation of whole machine tool, showing the motion of all rotational and linear axes

TURNING AND TURN-MILL UP TO 5 AXES

- Supports all machine turning cycles
- Rest-machining capability is built into all turning operations
- Integrated Turn-Mill capability with XZC, XYZC and XYZCB axes
- Support of Back Spindles

WIRE-EDM

- SolidCAM supports 2-axis and 4-axis Wire-EDM
- Handling of profiles and tapers with constant and variable angles
- Full user control of stop points and wire cutting conditions

SERVICES

- Customizing of Post Processors
- Installation and integration services
- Training in classroom or onsite
- Hotline support